

HOBART701 S Ridge Avenue, Troy, OH 45374
1-888-4HOBART • www.hobartcorp.com**HEC20 SERIES
HALF-SIZE ELECTRIC
CONVECTION OVEN****HOBART HALF-SIZE
CONVECTION OVENS
... MORE EVEN
TEMPERATURE.
MORE PRODUCT
CONSISTENCY.****MODELS:****HEC201 — Single section on
4" legs.****HEC202 — Two sections on
16⁵/₈" legs.****HEC203 — Single section on
Open Stand with 6" legs.**

- **Solid state thermostats** — Fast response to load conditions; improved temperature distribution for better baking uniformity. Increased production capacity.
- **Recessed controls** — Prevents controls from being bumped out of adjustment or broken.
- **Cool down switch** — Allows blower to operate with heat source off while door is open. Allows rapid oven cool-down for cleaning or cooking at lower temperatures.
- **Heat cycle light** — Informs operator when preset temperature has been reached.
- **Door opens full 180°** — Allows easy access to oven interior; easy cleaning.
- **Field reversible door** — Allows door change to meet customer's work flow.
- **Stainless steel door seal** — Provides airtight seal where door meets oven; durable, long-life construction; easy cleaning.
- **Stainless steel door liner and porcelain enamel oven cavity** — Provides durable construction; easy cleaning. Optional stainless steel oven cavity.

- **Cool-to-the-touch door handle** — Prevents operator from burning hands; eliminates need to wear gloves to open/close door.
- **Door interlock switch** — Prevents blower and heater from operating when door is opened; reduces heat loss during load/unload processes.
- **Door observation window** — Allows product to be viewed for doneness without opening the doors.
- **Permanently lubricated fan motor** — Eliminates routine motor maintenance. Reduces repair costs and downtime.
- **Accommodates nine racks** — Maximizes output for limited space.
- **High density insulation** — Located in oven walls and doors; reduces heat loss and holds heat longer.

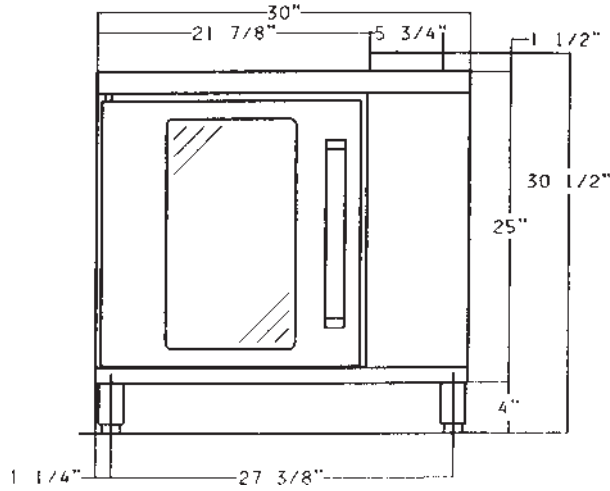
Specifications, Details and Dimensions on Reverse Side.



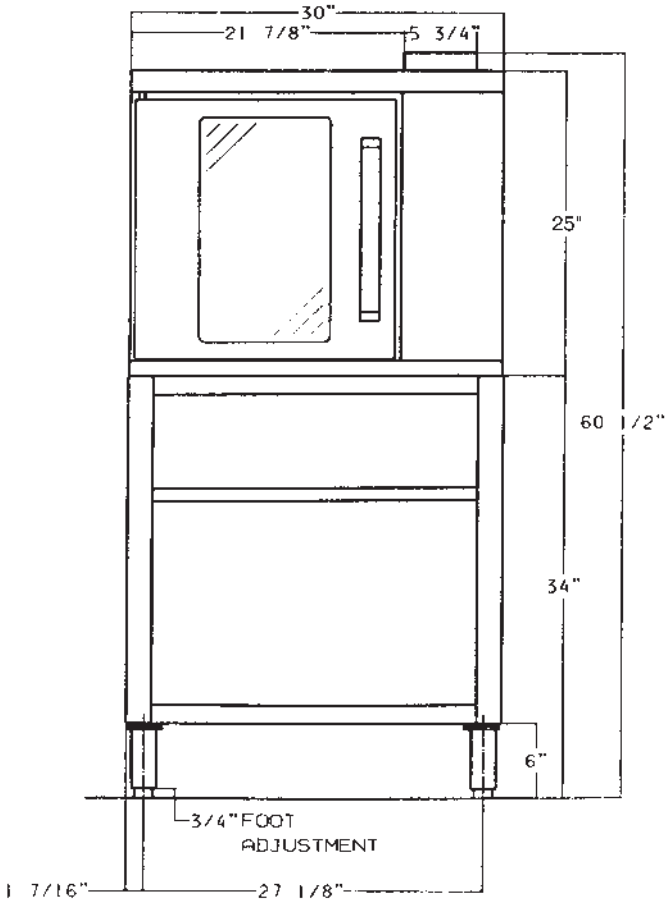
**HEC20 SERIES
HALF-SIZE ELECTRIC
CONVECTION OVEN**



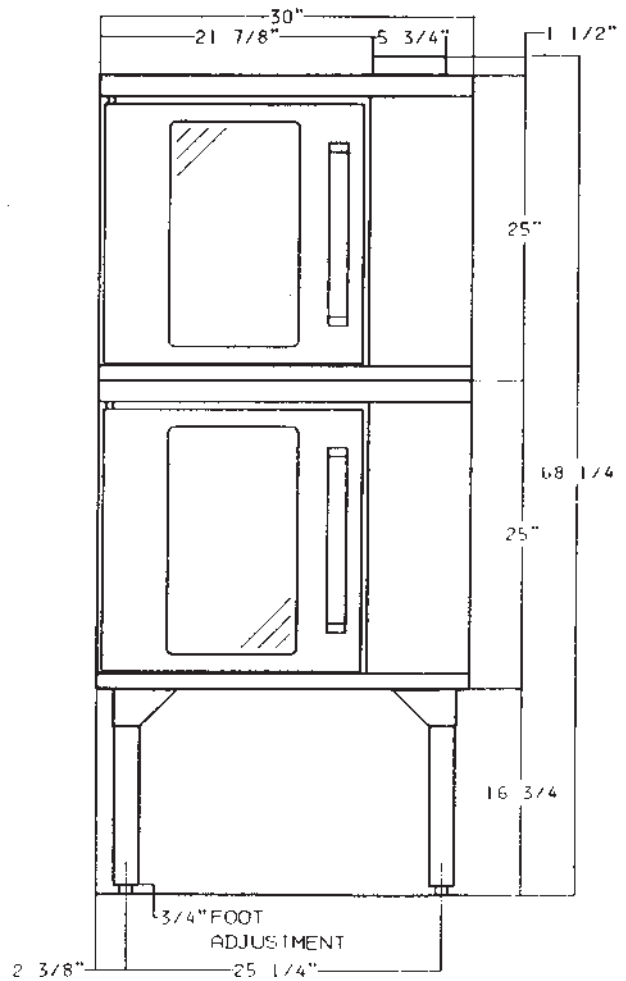
701 S Ridge Avenue, Troy, OH 45374
1-888-4HOBART • www.hobartcorp.com



**Front View
HEC201**



**Front View
Oven with Stand
HEC203**

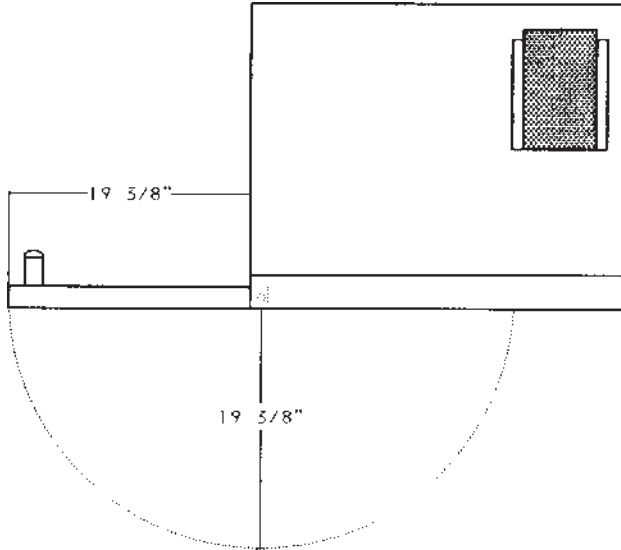


**Front View
HEC202 Ovens with
16 5/8" Legs**

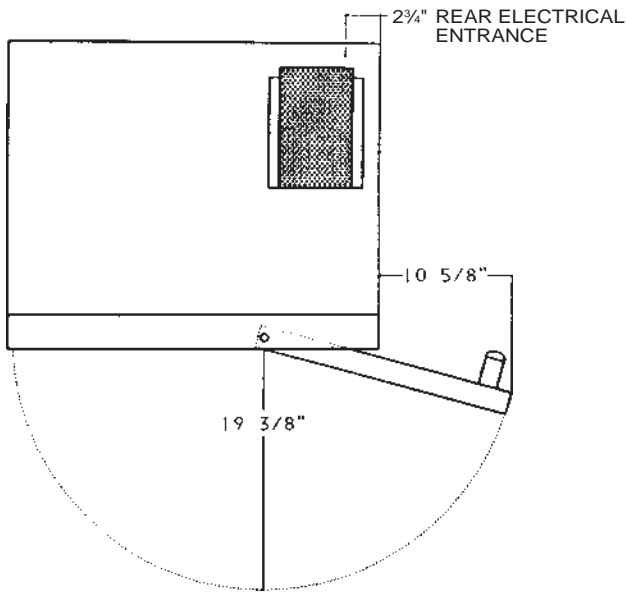


701 S Ridge Avenue, Troy, OH 45374
1-888-4HOBART • www.hobartcorp.com

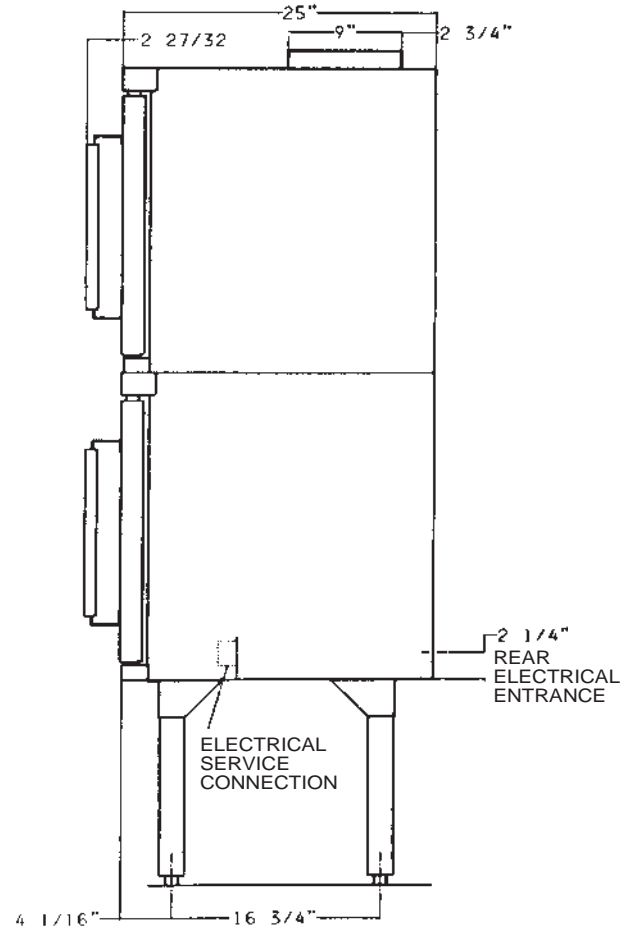
HEC20 SERIES HALF-SIZE ELECTRIC CONVECTION OVEN



**Top View
Door Opening to Left**



**Top View
Door Opening to Right**



Side View

MODEL	OVERALL EXTERNAL DIMENSIONS			COMPARTMENT'S INTERNAL DIMENSIONS			RACK DATA (pan capacities shown for single rack)							TOTAL KW	208,240V 3-PHASE LOADING			NOMINAL AMPS PER LINE WIRE									
	W	D	H	W	D	H	NO. STD. RACKS	STD. RACK SPACING IN.	NO. OPTIONAL RACKS	RACK SIZE IN.	8" OD PIE TINS	#200 PANS	12 X 20 PANS		KW PER PHASE			3 PHASE			1 PHASE						
	IN.	IN.	IN.	IN.	IN.	IN.									L1-L2	L2-L3	L1-L3	208V			240V						
																		L1	L2	L3	L1	L2	L3	208V	240V		
HEC201			29				5		4	14% x 20%	3	1	1	5.5	2.5	5	2.5	L1	L2	L3	L1	L2	L3	208V	240V		
HEC202	30	25	66%	15 1/4	21	20	10	1 1/8	8					11.0	3.0	3.0	5.0	23	10	12	20	9	11	26	23		
HEC203			65				5		4					5.5	2.5	.5	2.5	46	20	24	40	18	22	52	46		

HEC20 SERIES HALF-SIZE ELECTRIC CONVECTION OVEN

HOBART

701 S Ridge Avenue, Troy, OH 45374
1-888-4HOBART • www.hobartcorp.com

SPECIFICATIONS Listed by Underwriters Laboratories Inc and NSF International. USDA Listed.

CONSTRUCTION: Outer shell is reinforced sheet steel furnished with stainless steel front and permalucent gray sides, top and back. Insulation is provided on top, rear, both sides, bottom and door. Standard oven cavity is porcelain enamel on steel. Optional stainless steel sides, top and back. Full-height door opens 180° to the left. Door has large-pane window and cool-to-the-touch handle. Durable mechanical door latch. Permanent sanitary door seal. Racks have positive stop.

CONTROLS: Controls recessed on right front of oven. Temperature controlled by electronic thermostat. Temperature dial ranges from OFF to 200°-500°F. A three position switch has OFF, ON (which energizes blower and heating elements) and COOL DOWN (which energizes blower). Each oven cavity has two signal lights; Power on and Oven Ready. One

hour dial timer with buzzer. Power to heating elements handled by long life mercury relay. Each section has full-time venting. An electrical interlock de-energizes blower and heating elements when door is opened.

ELECTRICAL: ½ H.P., 1725-1140 RPM sealed, permanently lubricated ball bearing 2-speed blower motor. Enclosed tubular heating elements located at oven cavity's right side encircle blower. Rated power input is 5.5KW per section. Wiring and connections are located behind and below the control panel and are accessible from the front. Connections are tension-free and corrosion-resistant. Units are wired for 1 or 3-phase power supply. (See electrical data block for phase loading.)

OPTIONS:

- Stainless steel sides and top.
- Stainless steel back.
- Stainless steel oven interior.

ACCESSORIES:

- Set of four 4" adjustable stainless steel legs.
- Set of four 16⁵/₈" adjustable stainless steel legs and stack set.
- 28" stand with 9-rack storage capacity.
- Four 6" adjustable stainless steel legs for 28" stand.
- Set of four casters for stand.
- Extra oven rack.

WEIGHTS: (Approximate)

	NET	SHIPPING
HEC201	270 lbs.	285 lbs.
HEC202	533 lbs.	588 lbs.
HEC203	386 lbs.	421 lbs.

As continued product improvement is a policy of Hobart, specifications are subject to change without notice.



701 S RIDGE AVENUE
TROY, OHIO 45374-0001