

## MODEL VSX5G GAS COUNTER CONVECTION STEAMER



### SPECIFICATIONS:

Single compartment gas counter convection steamer, Vulcan-Hart Model No. VSX5G. 304 series stainless steel exterior. Stainless steel cooking compartment with coved interior corners. High output 45,000 BTU/hr. stainless steel steam generator. Manual controls. Heavy duty "slammable" door and door latch mechanism. 4" stainless steel legs. 3/4" rear gas connection and gas pressure regulator. Requires 120/60/1 power supply, 2.0 amps maximum draw. 6 foot power cord with 3 prong plug. Split water line connection. Single drain connection.

Exterior dimensions: 24"w x 32"d x 44.38"h on 4" legs.

CSA design certified. NSF listed.

**SPECIFY TYPE OF GAS WHEN ORDERING.**

**SPECIFY ALTITUDE WHEN ABOVE 2,000 FT.**

- VSX5G 5 pan capacity

### STANDARD FEATURES

- 304 series stainless steel exterior.
- Stainless steel cooking compartment with coved interior corners.
- High output 45,000 BTU/hr. stainless steel steam generator.
- Manual controls.
- Heavy duty "slammable" door and door latch mechanism.
- 4" stainless steel legs.
- 3/4" rear gas connection and gas pressure regulator.
- Requires 120/60/1 power supply, 2.0 amps maximum draw. 6 foot power cord with 3 prong plug.
- Split water line connection.
- Single drain connection.
- One year limited parts and labor warranty.

### OPTIONS

- Second year extended limited parts and labor warranty contract.

### ACCESSORIES

- 12" x 20" stainless steel pans:
  - 1" deep (solid) (perforated) Qty. \_\_\_\_.
  - 2 1/2" deep (solid) (perforated) Qty. \_\_\_\_.
  - 4" deep (solid) (perforated) Qty. \_\_\_\_.
- Stainless steel pan cover. Qty. \_\_\_\_.
- 28" open leg stand with pan slides 24"w x 28"h.
- 34" open leg stand with pan slides 24"w x 34"h.
- Set of two universal pan slides.
- Removable sliding shelf. Qty. \_\_\_\_.
- Water treatment system.



# MODEL VSX5G

## GAS COUNTER CONVECTION STEAMER

### SERVICE CONNECTIONS:



Unless otherwise specified, Field Wire Electrical Connection to be 120/60/1 with grounding wire. Furnish with 6 foot cord with 3 prong plug. Maximum amps 2.0.



DRAIN: 1" (25 mm) IPS O.D. piped to open floor drain. No solid connection. 24" length before open air gap opening (no bends or elbows).



GAS CONNECTION: 3/4" (19 mm) IPS supply line required.



GENERATOR WATER: 5/8" (10 mm) O.D. tubing at 25- 50 PSI (170-345 kPa).



CONDENSING WATER: 5/8" (10 mm) O.D. tubing at 25-50 PSI (170-345 kPa).

### WATER QUALITY STATEMENT:

The fact that a water supply is potable is no guarantee that it is suitable for steam generation. Your water supply must be within these general guidelines:

<b>SUPPLY PRESSURE</b>	20 - 60 psig
<b>HARDNESS*</b>	less than 3 grains
<b>SILICA</b>	less than 13 ppm
<b>TOTAL CHLORIDE</b>	less than 4.0 ppm
<b>pH RANGE</b>	7-8
<b>UN-DISSOLVED SOLIDS</b>	less than 5 microns
* 17.1 ppm = 1 grain of hardness	

Other factors affecting steam generation are iron content, amount of chloridation and dissolved gases. Water supplies vary from state to state and from locations within a state. Therefore it is necessary that the local water treatment specialist be consulted before the installation of any steam generating equipment.

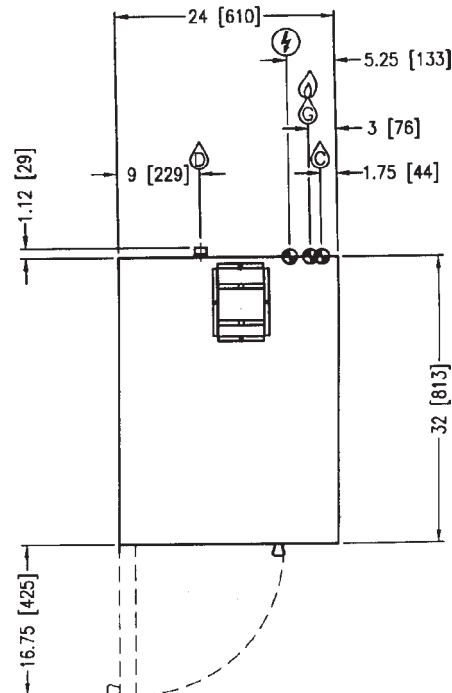
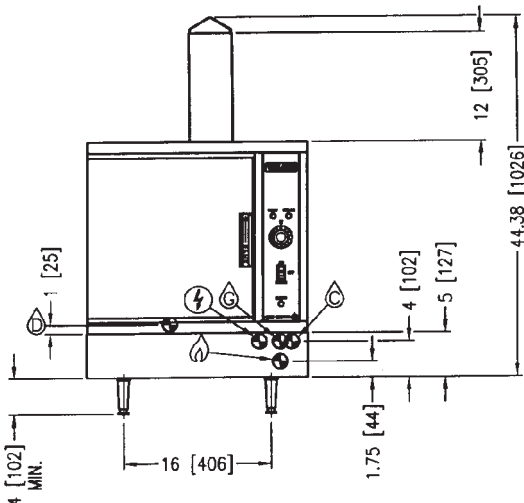
### IMPORTANT:

1. A pressure regulator sized for this unit is included. Natural gas 4" W.C., propane gas 11" W.C.
2. Gas line connecting to unit must be 3/4" or larger. If flexible connectors are used, the inside diameter must be at least the same as the 3/4" iron pipe and rated for the correct gas input.
3. An adequate ventilation system is required for commercial cooking equipment. Information may be obtained by writing to the National Fire Protection Association, Batterymarch Park, Quincy, MA 02289. When writing, refer to NFPA No. 96.
4. These units are manufactured for installation in accordance with ANSZ223.1A (latest edition), National Fuel Gas Code. Copies may be obtained from the American Gas Association, 1515 Wilson Blvd., Arlington, VA 22209.
5. Clearance:
 

	Combustible	Non-Combustible
Rear	6"	6"
Left Side	3"	3"
Right Side	8"	8"

### NOTE:

- Dimensions which locate the above connections have a tolerance of + or -3" (+ or -75 mm).
- Installation of backflow preventers, vacuum breakers and other specific code requirements is the responsibility of the owner and installer. It is the responsibility of the owner and installer to comply with local codes.
- Plastic drains are not recommended due to inherent limited temperatures of the plastic. Boiler purge temperatures may exceed 180°F. The installer may be required to provide means to reduce boiler purge water temperature to be that of the condensate temperature of 140°F or less.
- This appliance is manufactured for commercial installation only and is not intended for home use.



**NOTE:** In line with its policy to continually improve its products, Vulcan-Hart Company reserves the right to change materials and specifications without notice.